



AQUA GARANT

QUALITY FISH FEED





Fry Feed

Aqua Start 0,4	3
Aqua Start 0,6	4
Aqua Start 1,0	4
Aqua Start 1,2	5
Aqua Start 1,5	5



Trout Feed

Aqua Uni.....	6
Aqua Dynamic	7
Aqua Profi	8
Aqua Dynamic Semi Swim	9



Pigmented Feed

Aqua Profi Pigment.....	10
-------------------------	----



Carp Feed

Aqua Classic	11
Aqua Intensiv	12
Aqua Vital Swim	13



Specialties

Aqua Catch.....	14
-----------------	----

African Catfish

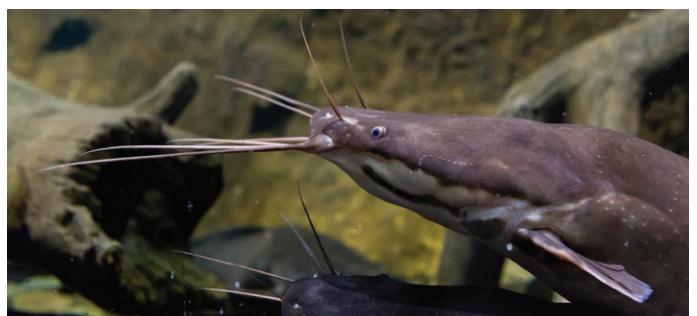
Aqua Wels swim.....	15
Aqua Catfish swim	16

European Catfish

Aqua Uni.....	17
---------------	----

Sturgeon

Aqua Uni.....	18
Aqua Caviar	19



AQUA START 0,4

FRY FEED | 5 kg Bucket

Declaration **0,4 mm**

Crude protein	60 %
Crude fat	15 %
Crude fiber	1,5 %
Phosphorus	2,30 %
Vitamin A	25000 I.U.
Vitamin D3	2000 I.U.
Vitamin E	25 mg
Digestible Energy	19,0 MJ

Structure**Composition**

Fishmeal SP,
Peas,
Fish oil,
Soy lecithin,
Fish gelatin

Features

- Extruded, slowly sinking growth fry feed
- Fishmeal only in premium quality
- Water-soluble attractants for best palatability and feed acceptance
- With immunostimulators for a high survival rate and healthy fish fry
- „GM free“ according to EU-VO 1829/2003

Due to natural variations in the raw materials, the composition crude fiber and phosphorus content may vary compared to the stated values. See label for further information.

Feeding guide (kg feed per 100 kg fish per day)**Trout**

Fishsize g	Feedsized mm	Water temperature							
		4° C	6° C	8° C	10° C	12° C	14° C	16° C	18° C
<0,3	0,4	2,0	2,5	2,9	3,1	3,4	3,6	3,8	3,6

Carp

Fishsize g	Feedsized mm	Water temperature							
		10° C	14° C	18° C	20° C	22° C	24° C	26° C	28° C
<0,3	0,4	2,5	3,3	4,9	5,8	6,4	6,6	6,0	4,5

The recommended values are approximate. The amount of feed must be adapted to the relations of production



AQUA START 0,6 | 1,0

FRY FEED | 20 kg Bag

Declaration

0,6 mm | 1,0 mm

Crude protein	60 %
Crude fat	15 %
Crude fiber	1,5 %
Phosphorus	2,30 %
Vitamin A	25000 I.U.
Vitamin D3	2000 I.U.
Vitamin E	25 mg
Digestible Energy	19,0 MJ

Structure



Composition

Fishmeal SP,
Peas,
Fish oil,
Soy lecithin,
Fish gelatin

Features

- Extruded, slowly sinking growth fry feed
- Fishmeal only in premium quality
- Water-soluble attractants for best palatability and feed acceptance
- With immunostimulators for a high survival rate and healthy fish fry
- „GM free“ according to EU-VO 1829/2003

Due to natural variations in the raw materials, the composition crude fiber and phosphorus content may vary compared to the stated values. See label for further information.

Feeding guide (kg feed per 100 kg fish per day)

Trout

Fishsize g	Feedsizes mm	Water temperature							
		4° C	6° C	8° C	10° C	12° C	14° C	16° C	18° C
0,3 - 1,0	0,6	1,7	2,1	2,4	2,6	2,8	3,0	3,2	3,0
1,0 - 2,5	1,0	1,4	1,7	2,1	2,3	2,5	2,6	2,7	2,6

Carp

Fishsize g	Feedsizes mm	Water temperature							
		10° C	14° C	18° C	20° C	22° C	24° C	26° C	28° C
0,3 - 2,0	0,6	1,8	2,8	4,3	5,0	5,2	5,4	5,0	3,8

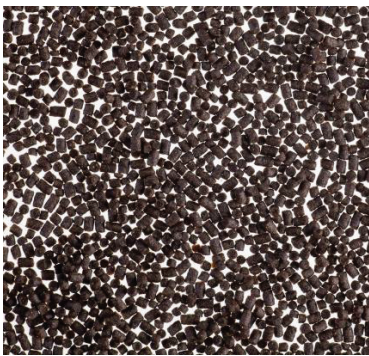
The recommended values are approximate. The amount of feed must be adapted to the relations of production

AQUA START 1,2 | 1,5

FRY FEED | 25 kg Bag

Declaration**1,2 mm | 1,5 mm**

Crude protein	52 %
Crude fat	20 %
Crude fiber	0,5 %
Phosphorus	1,20 %
Vitamin A	12500 I.U.
Vitamin D3	2250 I.U.
Vitamin E	250 mg
Digestible Energy	20,0 MJ

Structure**Composition**

Fish meal SP,
Wheat,
Fish oil,
Wheat gluten,
Hemoglobin powder SD,
Poultry meal,
Bood meal,
Soy protein concentrate

Features

- Extruded, slowly sinking growth fry feed
- Fishmeal only in premium quality
- Water-soluble attractants for best palatability and feed acceptance
- With immunostimulators for a high survival rate and healthy fish fry
- High content of phospholipids promotes the development of the fish
- „GM free“ according to EU-VO 1829/2003

Due to natural variations in the raw materials, the composition crude fiber and phosphorus content may vary compared to the stated values. See label for further information.

Feeding guide (kg feed per 100 kg fish per day)**Trout**

Fishsize g	Feedsite mm	Water temperature							
		4° C	6° C	8° C	10° C	12° C	14° C	16° C	18° C
2,5 - 5	1,2	1,2	1,4	1,7	2,2	2,5	2,7	2,8	2,7
5 - 15	1,5	1,0	1,2	1,5	1,9	2,1	2,3	2,5	2,4

Carp

Fishsize g	Feedsite mm	Water temperature							
		10° C	14° C	18° C	20° C	22° C	24° C	26° C	28° C
2 - 8	1,2	1,5	2,4	3,3	3,7	4,1	4,5	4,0	3,1

The recommended values are approximate. The amount of feed must be adapted to the relations of production.



AQUA UNI

TROUT | 10 kg, 25 kg Bag

Declaration	2 mm	3 mm	4 mm 6 mm
Crude protein	47 %	47 %	45 %
Crude fat	16 %	16 %	16 %
Crude fiber	1,5 %	2,0 %	2,0 %
Phosphorus	1,15 %	1,10 %	1,00 %
Vitamin A	10000 I.U.	10000 I.U.	10000 I.U.
Vitamin D3	1500 I.U.	1500 I.U.	1500 I.U.
Vitamin E	200 mg	200 mg	200 mg
Digestible Energy	18,0 MJ	18,0 MJ	18,0 MJ

Structure



Composition

Wheat,
Fishmeal SP,
Poultry meal,
Sunflower concentrate,
Fish oil,
Blood meal,
Rapeseed oil,
Rapeseed cake,
Hemoglobin powder

Features

- Extruded, slowly sinking growth feed for salmonids
- Universally useable, even in unfavorable environmental conditions
- Fishmeal only in premium quality
- High quality animal protein from poultry from verified quality
- Rapeseed oil in food grade
- Without any soybean meal
- „GM free“ according to EU-VO 1829/2003

Due to natural variations in the raw materials, the composition crude fiber and phosphorus content may vary compared to the stated values. See label for further information.

Feeding guide (kg feed per 100 kg fish per day)

Fishsize			Water temperature							
g	cm	Feedsizesize mm	4° C	6° C	8° C	10° C	12° C	14° C	16° C	18° C
15-50	11-16	2	0,9	1,2	1,4	1,6	1,8	2,1	2,2	2,0
50-150	16-22	3	0,7	1,0	1,1	1,3	1,5	1,8	1,9	1,6
150-350	22-31	4	0,6	0,8	0,9	1,1	1,3	1,5	1,6	1,4
350-600	31-36	6	0,5	0,7	0,8	0,9	1,1	1,3	1,4	1,2
>600	>36	6	0,4	0,6	0,7	0,8	1,0	1,1	1,2	1,1

The recommended values are approximate. The amount of feed must be adapted to the relations of production

AQUA DYNAMIC

TROUT | 25 kg Bag

Declaration	2 mm	3 mm	4 mm 6 mm
Crude protein	46 %	44 %	42 %
Crude fat	22 %	26 %	28 %
Crude fiber	1,5 %	1,5 %	1,5 %
Phosphorus	1,15 %	1,05 %	1,00 %
Vitamin A	10000 I.U.	10000 I.U.	10000 I.U.
Vitamin D3	1500 I.U.	1500 I.U.	1500 I.U.
Vitamin E	200 mg	200 mg	200 mg
Digestible Energy	20,0 MJ	21,0 MJ	21,5 MJ

Structure



Composition

Wheat,
Poultry meal,
Fishmeal SP,
Rapeseed oil,
Sunflower concentrate,
Fish oil,
Blood meal,
Rapeseed cake,
Hemoglobin powder

Features

- Extruded, slowly sinking growth feed for salmonids
- Fishmeal only in premium quality
- High quality animal protein from poultry from verified quality
- High fish oil content
- Rapeseed oil in food grade
- Without any soybean meal
- „GM free“ according to EU-VO 1829/2003

Due to natural variations in the raw materials, the composition crude fiber and phosphorus content may vary compared to the stated values. See label for further information.

Feeding guide (kg feed per 100 kg fish per day)

Fishsize			Water temperature							
g	cm	Feedsizes mm	4° C	6° C	8° C	10° C	12° C	14° C	16° C	18° C
15-50	11-16	2	0,9	1,1	1,2	1,4	1,6	1,8	1,9	1,8
50-150	16-22	3	0,7	0,9	0,9	1,1	1,3	1,5	1,6	1,4
150-350	22-31	4	0,6	0,7	0,7	0,9	1,1	1,2	1,3	1,2
350-600	31-36	6	0,5	0,6	0,6	0,7	0,9	1,0	1,1	1,0
>600	>36	6	0,4	0,5	0,5	0,6	0,8	0,9	1,0	0,9

The recommended values are approximate. The amount of feed must be adapted to the relations of production



AQUA PROFİ

TROUT | 25 kg Bag

Declaration	2 mm	3 mm	4 mm 6 mm
Crude protein	46 %	44 %	42 %
Crude fat	22 %	22 %	24 %
Crude fiber	1,0 %	1,5 %	1,5 %
Phosphorus	1,15 %	1,10 %	1,00 %
Vitamin A	10000 I.U.	10000 I.U.	10000 I.U.
Vitamin D3	1500 I.U.	1500 I.U.	1500 I.U.
Vitamin E	200 mg	200 mg	200 mg
Digestible Energy	20,0 MJ	20,0 MJ	20,5 MJ

Structure



Composition

Fishmeal SP,
Wheat,
Poultry meal,
Sunflower concentrate,
Fish oil,
Rapeseed oil,
Hemoglobin powder,
Blood meal,
Wheat gluten

Features

- Extruded, slowly sinking growth feed for salmonids
- Fishmeal only in premium quality
- High quality animal protein from poultry from verified quality
- High fish oil content
- Rapeseed oil in food grade
- High digestibility for low feed quotient and low water contamination
- „GM free“ according to EU-VO 1829/2003

Due to natural variations in the raw materials, the composition crude fiber and phosphorus content may vary compared to the stated values. See label for further information.

Feeding guide (kg feed per 100 kg fish per day)

Fishsize		Feedsiz	Water temperature							
g	cm	mm	4° C	6° C	8° C	10° C	12° C	14° C	16° C	18° C
15-50	11-16	2	0,9	1,1	1,3	1,5	1,7	1,9	2,0	1,9
50-150	16-22	3	0,7	0,9	1,0	1,2	1,4	1,6	1,7	1,5
150-350	22-31	4	0,6	0,7	0,8	1,0	1,2	1,3	1,4	1,3
350-600	31-36	6	0,5	0,6	0,7	0,8	1,0	1,1	1,2	1,1
>600	>36	6	0,4	0,5	0,6	0,7	0,9	1,0	1,1	1,0

The recommended values are approximate. The amount of feed must be adapted to the relations of production

AQUA DYNAMIC SEMISWIM TROUT | 20 kg Bag

Declaration	2 mm	3 mm 4 mm
Crude protein	44 %	42 %
Crude fat	18 %	22 %
Crude fiber	1,5 %	1,5 %
Phosphorus	1,05 %	1,00 %
Vitamin A	10000 I.U.	10000 I.U.
Vitamin D3	1500 I.U.	1500 I.U.
Vitamin E	200 mg	200 mg
Digestible Energy	18,5 MJ	19,5 MJ

Structure

Composition

Wheat,
Fishmeal SP,
Poultry meal,
Rapeseed oil,
Fish oil,
Sunflower concentrate,
Wheat gluten,
Blood meal,
Hemoglobin powder

Features

- Extruded, mostly swimming growth feed for salmonids
- Universally useable, even in unfavorable environmental conditions
- Fishmeal only in premium quality
- High quality animal protein from poultry from verified quality
- Rapeseed oil in food grade
- Without any soybean meal
- „GM free“ according to EU-VO 1829/2003

Due to natural variations in the raw materials, the composition crude fiber and phosphorus content may vary compared to the stated values. See label for further information.

Feeding guide (kg feed per 100 kg fish per day)

Fishsize			Water temperature							
g	cm	Feedsizes mm	4° C	6° C	8° C	10° C	12° C	14° C	16° C	18° C
15-50	11-16	2	0,9	1,2	1,4	1,6	1,8	2,1	2,2	2,0
50-150	16-22	3	0,7	1,0	1,1	1,3	1,5	1,8	1,9	1,6
150-350	22-31	4	0,6	0,8	0,9	1,1	1,3	1,5	1,6	1,4
350-600	31-36	4	0,5	0,7	0,8	0,9	1,1	1,3	1,4	1,2
>600	>36	4	0,4	0,6	0,7	0,8	1,0	1,1	1,2	1,1

The recommended values are approximate. The amount of feed must be adapted to the relations of production

**AQUA PROFI PIGMENT****TROUT | 25 kg Bag****Declaration****4 mm | 6 mm**

Crude protein	42 %
Crude fat	24 %
Crude fiber	1,5 %
Phosphorus	1,00 %
Vitamin A	10000 I.U.
Vitamin D3	1500 I.U.
Vitamin E	200 mg
Digestible Energy	20,5 MJ
Astaxanthin	60 mg

Structure**Composition**

Fishmeal SP,
Wheat,
Poultry meal,
Sunflower concentrate,
Fish oil,
Rapeseed oil,
Blood meal,
Wheat gluten,
Hemoglobin powder

Features

- Required red fleshiness in 4 - 6 weeks
- Extruded, slowly sinking growth feed for salmonids
- Fishmeal only in premium quality
- High quality animal protein from poultry from verified quality
- High fish oil content
- Rapeseed oil in food grade
- High digestibility for low feed quotient and low water contamination
- „GM free“ according to EU-VO 1829/2003

Due to natural variations in the raw materials, the composition crude fiber and phosphorus content may vary compared to the stated values. See label for further information.

Feeding guide (kg feed per 100 kg fish per day)

Fishsize		Feedsizes	Water temperature							
g	cm		4° C	6° C	8° C	10° C	12° C	14° C	16° C	18° C
150-350	22-31	4	0,6	0,7	0,8	1,0	1,2	1,3	1,4	1,3
350-600	31-36	6	0,5	0,6	0,7	0,8	1,0	1,1	1,2	1,1
>600	>36	6	0,4	0,5	0,6	0,7	0,9	1,0	1,1	1,0

The recommended values are approximate. The amount of feed must be adapted to the relations of production

AQUA CLASSIC**CARP | 25 kg Bag**

Declaration	2 mm	4 mm 6 mm 8 mm 10 mm
Crude protein	34 %	30 %
Crude fat	12 %	9 %
Crude fiber	3,5 %	3,5 %
Phosphorus	1,30 %	1,20 %
Vitamin A	10000 I.U.	8000 I.U.
Vitamin D3	1500 I.U.	1500 I.U.
Vitamin E	200 mg	175 mg
Digestible Energy	16,0 MJ	14,5 MJ

Structure**Composition**

Wheat,
Rapeseed cake,
Poultry meal,
Distillers grain,
Blood meal,
Fish oil,
Fish meal SP,
Hemoglobin powder

Features

- Extruded, slowly sinking growth feed for carp
- Fishmeal only in premium quality
- High quality animal protein from poultry from verified quality
- With fish oil for high omega-3 content in meat
- „GM free“ according to EU-VO 1829/2003

Due to natural variations in the raw materials, the composition crude fiber and phosphorus content may vary compared to the stated values. See label for further information.

Feeding guide (kg feed per 100 kg fish per day)

Fishsize g	Feedsizes mm	Water temperature							
		10° C	14° C	18° C	20° C	22° C	24° C	26° C	28° C
8-100	2	1,0	1,6	3,6	4,5	5,3	5,8	5,3	4,8
100-350	4	0,7	1,2	2,8	3,4	4,0	4,4	4,0	3,6
350-1000	6	0,4	1,0	2,2	2,7	3,2	3,5	3,2	2,8
>1000	6	0,4	0,7	1,5	1,9	2,3	2,6	2,3	2,0

The recommended values are approximate. The amount of feed must be adapted to the relations of production.



AQUA INTENSIV

CARP | 25 kg Bag

Declaration

4 mm | 6 mm | 8 mm | 10 mm

Crude protein	34 %
Crude fat	12 %
Crude fiber	3,5 %
Phosphorus	1,30 %
Vitamin A	10000 I.U.
Vitamin D3	1500 I.U.
Vitamin E	200 mg
Digestible Energy	15,5 MJ

Structure



Composition

Wheat,
Poultry meal,
Rapeseed cake,
Distillers grain,
Fish oil,
Blood meal,
Fish meal SP,
Hemoglobin powder

Features

- Extruded, slowly sinking growth feed for carp
- Fishmeal only in premium quality
- High quality animal protein from poultry from verified quality
- With fish oil for high omega-3 content
- „GM free“ according to EU-VO 1829/2003

See label for further information.

Feeding guide (kg feed per 100 kg fish per day)

Fishsize g	Feedsizes mm	Water temperature							
		10° C	14° C	18° C	20° C	22° C	24° C	26° C	28° C
100-350	4	0,7	1,1	2,6	3,1	3,7	4,0	3,7	3,3
350-1000	6	0,4	0,9	2,0	2,5	2,9	3,2	2,9	2,6
>1000	6	0,35	0,7	1,4	1,7	2,1	2,3	2,1	1,8

The recommended values are approximate. The amount of feed must be adapted to the relations of production.

AQUA VITAL SWIM

CARP | 20 kg Bag

Declaration	2 mm	4 mm 6 mm 8mm 10 mm
Crude protein	34 %	30 %
Crude fat	12 %	9 %
Crude fiber	3,5 %	3,5 %
Phosphorus	1,30 %	1,20 %
Vitamin A	10000 I.U.	8000 I.U.
Vitamin D3	1500 I.U.	1500 I.U.
Vitamin E	200 mg	175 mg
Digestible Energy	16,0 MJ	14,5 MJ

Structure**Composition**

Wheat,
Poultry meal,
Rapeseed cake,
Distillers grain,
Blood meal,
Fish oil,
Fish meal SP,
Rapeseed oil,
Hemoglobin powder

Features

- Extruded, swimming growth feed for carp
- Fishmeal only in premium quality
- High quality animal protein from poultry from verified quality
- With fish oil for high omega-3 content in meat
- „GM free“ according to EU-VO 1829/2003

Due to natural variations in the raw materials, the composition crude fiber and phosphorus content may vary compared to the stated values. See label for further information.

Feeding guide (kg feed per 100 kg fish per day)

Fishsize g	Feedsizes mm	Water temperature							
		10° C	14° C	18° C	20° C	22° C	24° C	26° C	28° C
8-100	2	1,0	2,0	3,0	3,5	4,3	5,0	5,0	4,0
100-350	4	1,0	1,7	2,5	3,0	3,5	4,0	4,0	3,2
350-1000	6	0,5	1,0	1,8	2,2	2,5	2,8	3,0	2,5
>1000	6	0,4	0,7	1,5	1,9	2,3	2,6	2,3	2,0

The recommended values are approximate. The amount of feed must be adapted to the relations of production



AQUA CATCH

TROUT | 25 kg Bag, 10 kg Bucket

Declaration

22 mm

Crude protein	35 %
Crude fat	20 %
Crude fiber	2,0 %
Phosphorus	0,70 %
Digestible Energy	18,5 MJ

Structure



Composition

Wheat,
Fish meal SP,
Soybean meal,
Peas,
Fish oil,
animal Fat,
Wheat gluten,
Blood Meal

Features

- 22 mm pellet
- Contains fish meal and fish oil
- Very stable in water
- ideal for fishing
- through the center hole useable for boilie-system
- due to the strong attraction of the feed pellets, this feed is suitable for very well heavily exploited waters and experienced fishes
- „GM free“ according to EU-VO 1829/2003

Due to natural variations in the raw materials, the composition crude fiber and phosphorus content may vary compared to the stated values. See label for further information.

Feeding guide

The high oil and fish meal content of Aqua Catch exerts a strong attractant effect on fish. The pellet diameter of 22 mm causes that mainly large fishes can eat these pellets.

Aqua Catch is also used as baits for big carps and catfishes. The high water stability of the pellet guarantees a long attractants.

Futher, Aqua Catch is used for boilie-system fishing.

AQUA WELS SWIM

AFRICAN CATFISH | BigBag, 20 kg Bag

Declaration	2 mm	3 mm	4 mm
Crude protein	48 %	46 %	44 %
Crude fat	13 %	13 %	14 %
Crude fiber	1,5 %	1,5 %	1,5 %
Phosphorus	1,20 %	1,20 %	1,10 %
Vitamin A	10000 I.E.	10000 I.E.	10000 I.E.
Vitamin D3	1500 I.E.	1500 I.E.	1500 I.E.
Vitamin E	200 mg	200 mg	200 mg
Digestible Energy	18,0 MJ	18,0 MJ	18,0 MJ

Structure



Composition

Wheat,
Fishmeal SP,
Poultry meal,
Sunflower concentrate,
Wheat gluten,
Fish oil,
Soy protein concentrate,
Rapeseed oil

Features

- Extruded, swimming growth feed for african catfish
- designed for warm water recirculation systems
- Fishmeal only in premium quality
- high content of fish meal
- high content of fish oil
- „GM free“ according to EU-VO 1829/2003

Due to natural variations in the raw materials, the composition crude fiber and phosphorus content may vary compared to the stated values. See label for further information.

Feeding guide (kg feed per 100 kg fish per day)

Fishsize g	Feedsizes mm	Water temperature				
		22° C	24° C	26° C	28° C	30° C
10-50	2	3,8	4,6	5,0	4,6	4,1
50-150	3	3,0	3,6	4,0	3,6	3,2
150-500	4	2,0	2,3	2,6	2,3	2,0
500-1000	4	1,4	1,6	1,8	1,6	1,4
>1000	4	1,1	1,3	1,5	1,4	1,2

The recommended values are approximate. The amount of feed must be adapted to the relations of production.



AQUA CATFISH SWIM

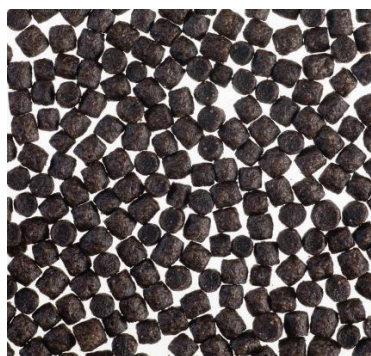
AFRICAN CATFISH | BigBag, 20 kg Bag

Declaration

3 mm | 4 mm | 6 mm

Crude protein	44 %
Crude fat	13 %
Crude fiber	2,0 %
Phosphorus	1,20 %
Vitamin A	10000 I.U.
Vitamin D3	1500 I.U.
Vitamin E	200 mg
Digestible Energy	17,5 MJ

Struktur



Zusammensetzung

Wheat,
Fishmeal SP,
Poultry meal,
Sunflower concentrate,
Wheat gluten,
Fish oil,
Rapeseed oil

Eigenschaften

- Extruded, swimming growth feed for african catfish
- designed for warm water recirculation systems
- Fishmeal only in premium quality
- high content of fish meal
- Rapeseed oil in food grade
- „GM free“ according to EU-VO 1829/2003

Due to natural variations in the raw materials, the composition crude fiber and phosphorus content may vary compared to the stated values. See label for further information.

Feeding guide (kg feed per 100 kg fish per day)

Fishsize g	Feedsizes mm	Water temperature				
		22° C	24° C	26° C	28° C	30° C
50-150	3	3,0	3,6	4,0	3,6	3,2
150-500	4	2,0	2,3	2,6	2,3	2,0
500-1000	6	1,4	1,6	1,8	1,6	1,4
>1000	6	1,1	1,3	1,5	1,4	1,2

The recommended values are approximate. The amount of feed must be adapted to the relations of production.

AQUA UNI

EUROPEAN CATFISH | 10 kg, 25 kg Bag

Declaration	2 mm	3 mm	4 mm 6 mm
Crude protein	47 %	47 %	45 %
Crude fat	16 %	16 %	16 %
Crude fiber	1,5 %	2,0 %	2,0 %
Phosphorus	1,15 %	1,10 %	1,00 %
Vitamin A	10000 I.U.	10000 I.U.	10000 I.U.
Vitamin D3	1500 I.U.	1500 I.U.	1500 I.U.
Vitamin E	200 mg	200 mg	200 mg
Digestible Energy	18,0 MJ	18,0 MJ	18,0 MJ

Structure



Composition

Wheat,
Fishmeal SP,
Poultry meal,
Sunflower concentrate,
Fish oil,
Blood meal,
Rapeseed oil,
Rapeseed cake,
Hemoglobin powder

Features

- Extruded, slowly sinking growth feed for european catfish
- Universally useable, even in unfavorable environmental conditions
- Fishmeal only in premium quality
- High quality animal protein from poultry from verified quality
- Rapeseed oil in food grade
- Without any soybean meal
- „GM free“ according to EU-VO 1829/2003

Due to natural variations in the raw materials, the composition crude fiber and phosphorus content may vary compared to the stated values. See label for further information.

Feeding guide (kg feed per 100 kg fish per day)

Fishsize g	Feedsize mm	Water temperature							
		16° C	18° C	20° C	22° C	24° C	26° C	28° C	30° C
15-50	2	1,4	2,1	2,9	3,6	4,6	5,0	4,6	4,0
50-150	3	1,1	1,7	2,6	3,2	3,9	4,3	3,9	3,5
150-350	4	0,7	1,1	1,6	2,1	2,5	2,8	2,5	2,2
350-600	4	0,6	0,9	1,3	1,6	2,0	2,2	2,0	1,8
600-1000	6	0,5	0,7	1,0	1,3	1,6	1,8	1,6	1,4
>1000	6	0,4	0,5	0,8	1,0	1,3	1,4	1,3	1,1

The recommended values are approximate. The amount of feed must be adapted to the relations of production



AQUA UNI

STURGEON | 10 kg, 25 kg Bag

Declaration	2 mm	3 mm	4 mm 6 mm
Crude protein	47 %	47 %	45 %
Crude fat	16 %	16 %	16 %
Crude fiber	1,5 %	2,0 %	2,0 %
Phosphorus	1,15 %	1,10 %	1,00 %
Vitamin A	10000 I.U.	10000 I.U.	10000 I.U.
Vitamin D3	1500 I.U.	1500 I.U.	1500 I.U.
Vitamin E	200 mg	200 mg	200 mg
Digestible Energy	18,0 MJ	18,0 MJ	18,0 MJ

Structure



Composition

Wheat,
Fishmeal SP,
Poultry meal,
Sunflower concentrate,
Fish oil,
Blood meal,
Rapeseed oil,
Rapeseed cake,
Hemoglobin powder

Features

- Extruded, slowly sinking growth feed for sturgeons
- Universally useable, even in unfavorable environmental conditions
- Fishmeal only in premium quality
- High quality animal protein from poultry from verified quality
- Rapeseed oil in food grade
- Without any soybean meal
- „GM free“ according to EU-VO 1829/2003

Due to natural variations in the raw materials, the composition crude fiber and phosphorus content may vary compared to the stated values. See label for further information.

Feeding guide (kg feed per 100 kg fish per day)

Fishsize g	Feedsizes mm	Water temperature						
		14° C	16° C	18° C	20° C	22° C	24° C	26° C
15-50	2	1,1	1,4	1,7	2,0	2,2	2,1	1,8
50-150	3	0,9	1,2	1,4	1,6	1,8	1,7	1,5
150-500	4	0,65	1,0	1,15	1,3	1,4	1,3	1,2
500-1000	4	0,5	0,7	0,9	1,0	1,1	1,0	0,9
1000-3000	6	0,35	0,5	0,6	0,7	0,8	0,7	0,6
>3000	6	0,25	0,35	0,4	0,45	0,5	0,45	0,4

The recommended values are approximate. The amount of feed must be adapted to the relations of production

AQUA CAVIAR**STURGEON | 25 kg Bag****Declaration****6 mm | 8 mm | 10 mm | 12 mm**

Crude protein	50 %
Crude fat	12 %
Crude fiber	2,0 %
Phosphorus	1,20 %
Vitamin A	12500 I.U.
Vitamin D3	2000 I.U.
Vitamin E	500 mg
Digestible Energy	17,5 MJ
Immunostimulation	+++

Structure**Composition**

Wheat,
Fishmeal SP,
Poultry meal,
Sunflower concentrate,
Fish oil,
Blood meal,
Rapeseed cake,
Wheat gluten,
Hemoglobin powder

Features

- Extruded, slowly sinking feed for maturing females Sturgeons for the final stage of Caviar production
- Fishmeal only in premium quality
- Poultry meal from verified suppliers
- High level of EPA and DHA from fish oil
- With special Immuno-complex and high Vitamin C level for early production of high quality caviar
- „GM free“ according to EU-VO 1829/2003

Due to natural variations in the raw materials, the composition crude fiber and phosphorus content may vary compared to the stated values. See label for further information.

Feeding guide (kg feed per 100 kg fish per day)

Fishsize kg	Feedsizes mm	Water temperature						
		14° C	16° C	18° C	20° C	22° C	24° C	26° C
3 - 6	8	0,25	0,35	0,40	0,45	0,50	0,45	0,40
> 6	10, 12	0,20	0,28	0,33	0,37	0,40	0,37	0,33

The recommended values are approximate. The amount of feed must be adapted to the relations of production.

AQUA-GARANT: YOUR REGIONAL PARTNER

Quality & Safety

are ensured through ongoing raw material & product controls in our own laboratory as well as all major certifications (GMP+).

Research & Development

In cooperation with acknowledged institutions the latest scientific developments and current customer requirements are implemented.

Extensive distribution network

Aqua-Garant and its partners supply most of Middle and Eastern Europe. Please visit www.aqua-garant.com for contact details of your regional partner.



GARANT TIERNÄHRUNG

Producer

Garant-Tiernahrung Gesellschaft m.b.H.
Raiffeisenstraße 3, 3380 Pöchlarn, Austria
T +43 2757/2281-0 | F +43 2757/2281-67101
E office@garant.co.at | www.garant.co.at

